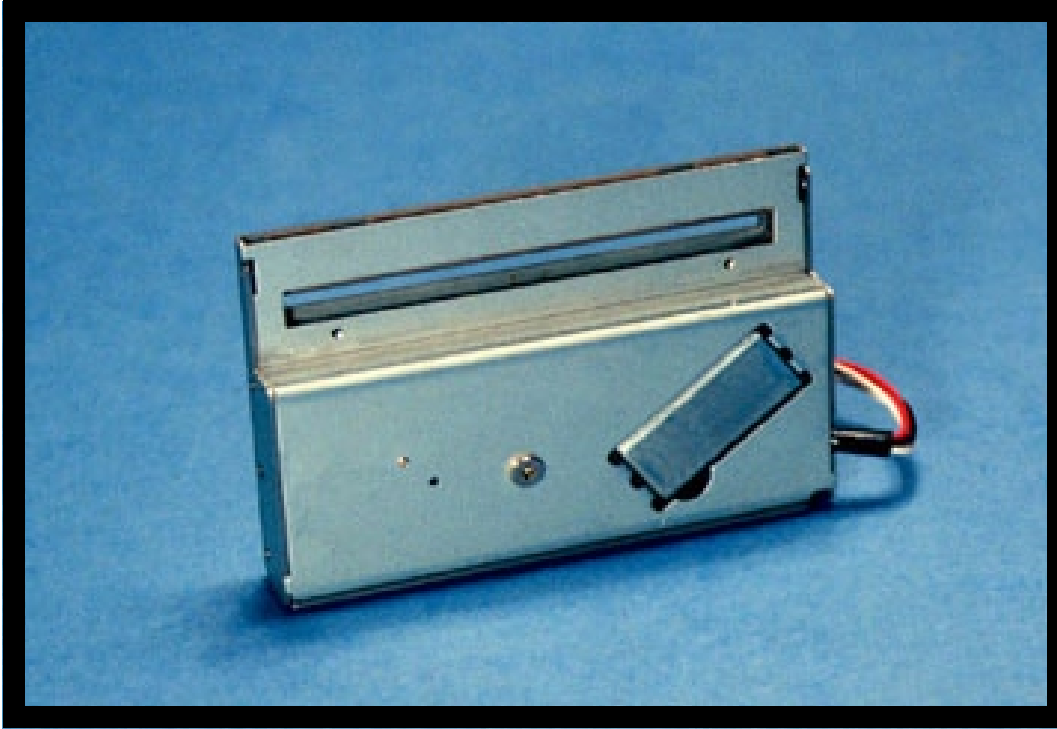




TECHNOLOGY, INC.

"Your Global Technology Partner"

G-Series: Compact, Low Cost Guillotine Cutters



Manufactured by Oyane Riki Mfg. Co., Ltd. of Japan using time tested methods for creating sharp cutting instruments, combined with modern manufacturing technology. Oyane has the long standing reputation for high quality products that is over 100 years old.

Photo: Model G-3404-0

High Quality and Economical

The G-series cutters are most ideally suited for compact printers, where space limitations and low power consumptions are important design considerations. The rugged, all metal case allows easy integration with the printer mechanism. Available in full or partial cut configuration, the high quality tool steel blades never need sharpening and provide clean cutting action. With the rated life exceeding one million cuts, the G-series cutters can handle media that is up to 6 mil thick. Each unit comes with an internal position sensing switch and a choice of 24 or 12 volt DC motor.

See reverse side for detailed technical specifications.

Typical Applications

The G-series rotary cutters are used in a wide variety of applications, such as receipt printers, cash registers, point-of-sale terminals, ticket machines, and self-service gasoline pumps.

Key Features

- Maximum Cutting Widths of 2.5", 3.4" or 4.7"
- High Cutting Capacity up to 6 mil
- Long Service Life - Up to One Million Cuts
- Compact Design
- Superior Reliability
- All Metal Construction
- Low Cost

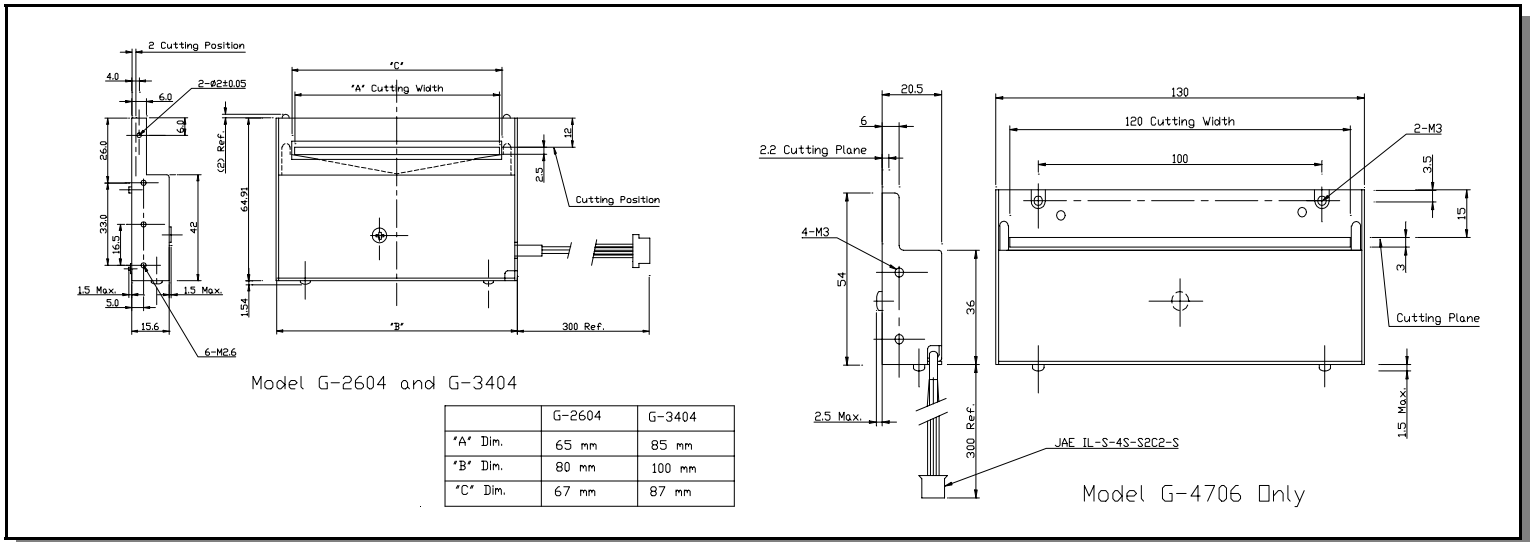
Distributed in the USA by:

CJP Technology, Inc.
610 N. Dwyer Drive
Anaheim, CA 92801
Tel./FAX: 714-535-0185
E-Mail: msawataki@msn.com

G-Series: Compact, Low Cost Guillotine Cutters

Technical Specifications

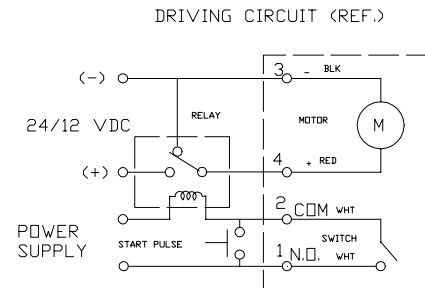
Dimensional Drawings (dimensions in mm)



Specifications

Model No.	G-2604	G-3404	G-4706
Cutting Width:	2.56 in	3.35 in	4.72 in
Max. Paper Thickness:	.004 in	.004 in	.006 in
Weight:	5 oz	6 oz	9 oz
Operating Voltage:	24 VDC or 12 VDC \pm 10%		
Current Draw - Operating:	24 VDC	12VDC	
	0.4 A	0.7 A	
- Starting:	1.6 A	3.2 A	
Starting Pulse Duration:	60-180 ms		
Actuation:	Momentary Contact SPDT - External		
Cutting Cycle Time:	280 ms max.		
Operating Temperature:	32°F to +140°F 0°C to +60°C		
Storage Temperature:	-4°F to +140°F -20°C to +70°C		
Service Life:	1,000,000 cuts at Max. Thickness		
MCBF:	2,000,000 million cycles		

Electrical Schematic



Ordering Information

Model No.	Max. Width	Max. Thickness	Full or Partial	Voltage
G-2604-0	2.56 in	.004 in	Full	24 VDC
G-2604-1	2.56 in	.004 in	Partial	24 VDC
G-2604-2	2.56 in	.004 in	Full	12 VDC
G-2604-3	2.56 in	.004 in	Partial	12 VDC
G-3404-0	3.35 in	.004 in	Full	24 VDC
G-3404-1	3.35 in	.004 in	Partial	24 VDC
G-3404-2	3.35 in	.004 in	Full	12 VDC
G-3404-3	3.35 in	.004 in	Partial	12 VDC
G-4706-0	4.72 in	.006 in	Full	24 VDC
G-4706-1	4.72 in	.006 in	Partial	24 VDC
G-4706-2	4.72 in	.006 in	Full	12 VDC
G-4706-3	4.72 in	.006 in	Partial	12 VDC

For Additional Information About CJP Technology Products Contact the Addresses on the Reverse Side or Visit our Website at www.cjptech.com